



TRUSTED SINCE 1958

**LINEMAN'S TESTING LABORATORIES
OF CANADA LIMITED**

UTILITY SUPPLY

A large, dark grey silhouette of a utility worker is positioned in the lower half of the page. The worker is wearing a hard hat and is shown in profile, working on a piece of equipment. To the right of the worker is a tall, vertical structure, possibly a transformer or a piece of testing equipment, with various cables and components. The entire scene is rendered in a minimalist, high-contrast style.

LTL AT A GLANCE



LINEMAN'S TESTING LABORATORIES OF CANADA

LINEMAN'S TESTING LABORATORIES OF CANADA ("LTL") is a privately owned Canadian company specializing in the utility, electrical, forestry and industrial sectors. Established in 1958 as a leading high voltage electrical service provider, LTL continues to diversify and expand to include the distribution of a vast selection of quality, brand name industry-related safety products, tools, and equipment. Representing national and international manufacturers, LTL stocks the largest inventory of insulating rubber goods, personal protective equipment, utility tools and equipment in Canada, while offering product recertification, fall arrest equipment inspection, factory-authorized tool repair and calibration in its full service NAIL-accredited high voltage testing centres.

LTL successfully maintains a loyal customer base across Canada and is recognized and respected for its integrity, and long-term business relationships. With an extensive inventory, sales offices, distribution centres, and high voltage testing and repair centres across Canada, our 6,000+ customers have come to rely on LTL for a turnkey solution including assistance with compliant product selection, timely delivery of brand name products, as well as accurate and reliable services.

Sixty years of experience affords LTL customers the confidence knowing that we understand the risks and dangers associated with tasks in the electrical and arborist sectors. The LTL team includes subject-matter experts, product specialists, knowledgeable customer care representatives, and professional facilitators with extensive industry experience. Our team knows the importance of staying apprised of changing legislation to assist our customers in the proper selection of tools and protective equipment required for the specific task, as well to support our customers in exercising due diligence, while ensuring compliance for the proper care, use and maintenance of this equipment.

Trusted since 1958, Lineman's Testing Laboratories has proven to be an industry leader for the provision of safety products, high voltage services, and specialized training. We have the skills, knowledge and tools to ensure you are compliant.

We welcome you to browse through the LTL UTILITY SUPPLY catalogue. Should you have any questions or suggestions, or are unable to find what you're looking for, please contact your local LTL branch and speak to a Product Specialist for assistance.

The Solution



- Canada's Largest Inventory of Insulating (Electrical) Rubber Gloves, PPE and Utility Tools and Safety Equipment
- Utility Supply Store (Toronto location) - shelves stocked with thousands of brand name utility tools and related equipment
- Outfitting Rig - mobile tool truck
- Certified Custom Grounding Assemblies
- Hydraulic and Battery Operated Tool Repair
- Automatic Glove Replacement Program – ensures timely turnaround of failed gloves during testing
- Compliant Uniform Fitting and Recommendation by LTL Product Specialists
- Online and Classroom Electrical Safety Training
- Expedited/Rush Order Service
- Green Cycle Equipment Recovery & Sales - refurbished transformers, line hardware and surplus equipment
- Rental Tools and Equipment
- Emergency Inventory Availability - 24/7
- Canada's Largest NAIL-Accredited High Voltage Testing Centres
- Natural Disaster/Emergency Contingency Plans-Laboratory Redundancy (Edmonton & Toronto Facilities)
- Factory-Authorized Warranty Tool Repair Centre
- Honeywell Certified Master Service Centre - calibration, repair and maintenance of gas detection equipment

MB, ON, QC & Maritime Provinces:	800-299-9769	Email: main@ltl.ca
AB, SK, Northern Territories:	800-530-8640	Email: mainab@ltl.ca
British Columbia:	866-347-6911	Email: mainbc@ltl.ca



Visit www.ltl.ca | ltlutilitysupply.com

What sets us apart?

- Niche product and service provider all-in-one; we **SERVICE** what we **SELL**
- 60 years of serving the Utility, Electrical, Forestry & Telecom industries
- Electrical Engineering/Substation Division team provides technical support to our product specialists when required
- Exceptional industry-experienced team including laboratory technicians, factory-authorized repair technicians, knowledgeable sales and customer care reps, linemen, electrical engineers and technologists, master electricians
- We have the knowledge, skills and tools to ensure you are compliant

PROTECT WORKERS ~ IMPROVE SAFETY ~ INCREASE EFFICIENCY ~ ENSURE COMPLIANCE



High Voltage Testing, Calibration, Inspection and
Factory-Authorized Warranty Tool Repair
Service Centres



LTL UTILITY SUPPLY ~ Extensive Inventory,
On-Site Store & Mobile Tool Truck



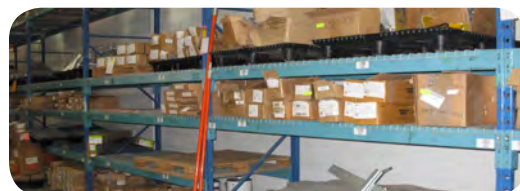
Training & Education ~ Online & On-site



Arc Flash Safety Program



Power Technical Services &
Equipment Supply



Surplus Equipment
Refurbished Recovery & Sales

Manufacturers

Trusted since 1958 for our brand name products



Not all products are available for sale across Canada. Please contact your local LTL rep for more information.

GLOVES - RUBBER & WORK

Gloves
Sleeves
Glove Bags
Glove Care

COVERUP - RUBBER & FIBER

Pole Guards
Line Hose
Rubber Blankets

LIVE LINE TOOLS

Grip-All Sticks, Switch Sticks
Link Sticks & Measuring Sticks
Live Line Platforms & Ladders
Universal Tool Accessories

GROUNDING & JUMPERS

Live Line Jumpers
Grounding Clamps
Grounding Cables
Grounding Accessories
Earth Anchors

PERSONAL PROTECTION

Arc Flash Clothing & Accessories
Head, Face & Eye
Footwear
Sunscreen & Insect Repellent

FALL PROTECTION & CLIMBING

Harnesses
Lanyards
Self-Retracting Lifelines (SRLs)
Belts
Pole Chokers

METERS & TESTERS

Potential Indicators
Phasing Sticks
Contamination Meters
Digital Multi-Meters
Clamp Meters

TOOLS

Lineman's Apprentice Starter Kit
Insulated Hand Tools
Uninsulated Hand Tools
Loadbust /Spiking Tools
Cable Scorers & Strippers
Shovels & Rakes
Hammers & Diggers
Accessories & Bits

CUTTERS & CRIMPERS

Battery Powered
Hydraulic
Manual
Compression Dies
Shell Actuated Wedge Tools

UNDERGROUND & CONFINED SPACE

Gas Detection
Tents & Shelters
Ladders

TRAFFIC SAFETY

Traffic Cones
Signs, Paddles and Flags
Apparel
Delineators
Sign Systems

RIGGING

Grips
Hoists
Hoist Accessories
Slings
Nylon & Wire Rope
Load Binders
Reel Lifting Device
Shackles/Chains

TRUCK

Custom Truck Kits
Digger Derrick Truck Kit
Wheel Chocks
Lug Locks
Outrigger Pads
Hinges & Rubber Accessories
Truck Body Accessories
Reels & Accessories
Tool Organizers
Safety Hooks
Platform Tool Trays
Tool Boards
Platform Covers
Liners & Scuff Pads
Tool Holders
Temporary Ground Mats
Bags & Pouches
Buckets & Accessories
Aprons
Chainsaw Scabbard
Miscellaneous Platform Equipment

LIGHTING & ACCESSORIES

Flashlights
Lanterns

FORESTRY

Carabiners
Pruners
Pole Saw Heads & Saw Blades
Fiberglass Sticks
Couplers & Fittings
Rope
Fall Protection
(refer to Fall Protection & Climbing)
Chainsaw Protection

STRINGING

Travellers
Pulling Equipment
Swivels
Dynamometer
Ropes

PAINTS & CLEANERS

Cleaning & Lubricants
Inverted & Fluorescent Paints

ELECTRICAL APPARATUS & POLE LINE EQUIPMENT

Crimp/Compression & Wedge Tap
Connectors

ACCESSORIES

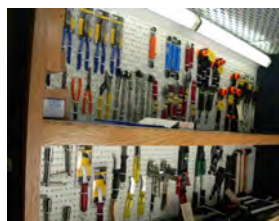
IR Windows
Ground Protection Mats
Protective Cases
Heat/Cold Shrink
Splices & Connectors
Terminations
Tapes
Stainless Steel Banding/Cable Ties

Insulating Rubber Gloves/PPE, Utility Tools and Related Equipment

- Largest stocking Canadian Distributor of Salisbury by Honeywell Insulating Rubber Gloves and related PPE
- Extensive product inventory; thousands of quality brand name products from the industry's leading manufacturers

Mobile Outfitting Rig

LTL UTILITY SUPPLY's mobile tool and equipment truck will be touring a city near you. We carry a wide selection of hand-picked specialty tools and equipment for the utility, forestry and industrial sectors.



Utility Supply | Toronto Store | Edmonton Showroom | Hours: Mon-Thu 8am - 4:30pm, Fri 8am - 4pm

LTL Utility Supply store and showroom shelves are stocked and LTL Product Specialists are available to answer all questions as well as assist with compliant product selection and fitting. For your convenience, we offer insulating equipment and tools pre-certified and ready to go! Visit our Clearance area.



Service & Repair Centres

IMPORTANT

Protect your workers and your business while exercising due diligence, ensure your lab is a reputable, accredited-certified lab

NAIL-Accredited High Voltage Testing & Recertification: Electrical Gloves & Rubber Goods

At LTL, we supply, test, calibrate, repair tools, and recertify personal protective equipment. LTL's specialized technicians ensure proper handling of all equipment when in our facilities. To ensure compliance, all equipment is tested to applicable standards or as directed by our customers. Rubber products include Insulating Rubber Gloves; Blankets; Cover-Up; Line Hose



Canada's Largest NAIL-Accredited Centres

As advocates for safety in the workplace, LTL is represented on the NAIL for PET (North American Independent Laboratories for Protective Equipment Testing) Board of Directors. NAIL is a not-for-profit organization dedicated to the development of uniformity and setting standards in testing, working in close association with ASTM and ANSI. To maintain accreditation, regular audits are conducted to ensure all industry accepted standards are strictly adhered to; the audit encompasses review of operational areas including but not limited to laboratory facility, equipment, training and knowledge of staff, quality control work procedures, and financial responsibility. Independent test facilities operating without NAIL-accreditation are not monitored to ensure industry best practices and standards are followed.

Certification and accreditation are often terms used interchangeably when discussing testing laboratories; however, there IS a difference. Oftentimes, laboratories are certified by organizations not from within the testing and/or PPE industry, with knowledge that is limited to their interpretation of the relevant standards; or, laboratories may not be certified at all, and simply offer services with no regard for compliance as required by IHSA. Accreditation is the formal declaration by a qualified and knowledgeable third party that the testing program is administered in a rigorous manner that strictly adheres to relevant standards for the equipment being tested, and that the lab operation as a whole meets industry best practices.



EXERCISE DUE DILIGENCE: Ensure the Lab testing your PPE is a NAIL-Accredited Certified Laboratory that provides a test report which proves advantageous in demonstrating due diligence to necessary authorities. **Read the full article at:** www.ltl.ca/resources/oel-article-exercise-due-diligence.pdf

Fabrication and Repair of Live Line Tools & Ground Assemblies

Certified Custom-Configured Ground Set Assembly and Annual Testing

- LTL builds and inventories an assortment of distribution/station grounding assembly units
- Grounding assembly clamps provide optimum support at the cable/ferrule connection when using a stress relief system
- Tinned copper threaded ferrules ensure low resistance connections
- Grounding cables are made with an extra strand of soft drawn #30 AWG (.01") copper, and are available in three jacket colours: yellow, clear, orange
- All grounding assembly components are tested to ASTM F855 by the manufacturer



Live Line Tool Certification, Repair and Re-Stocking: Extend the life of your live line tools

Before and After Each Use:

- Inspect the surface of the tool for contaminants such as dirt, creosote, grease, oil, gas/fuel, moisture, or any other foreign material. If contaminated, a quick rag wipe may be required to improve the integrity of the fiberglass.
- Visually inspect the tool for a smooth glossy surface. Check for deep cuts, scratches, nicks, gouges or signs of bruising or crushing. Pay special attention to the tip or working section of the tool.

Field Inspection Results:

- Do not use if ANY defects are found on the tool surface. The tool should be tagged, removed from service, and sent to LTL for repair.
- Broken strands of fiberglass allow water to wick within the fiberglass stick itself, which promotes dielectric failure or reduced insulating values.

LTL recommends annual laboratory cleaning, inspection, waxing, and testing of fiberglass tools to ensure safety and to extend the life of your tools.

SEE IEEE STANDARD 978-1984 Guide for In-Service Maintenance and Electrical Testing of Live Line Tools, Section 4.2

Metering, Instrumentation and Gas Detection Equipment Testing, Calibration & Repair

Meter Manufacturing, Repair and Calibration : Auto-Notification Test-Calibration Due

LTL's Instrument Technologists test, repair, and calibrate electrical instruments and equipment including, but not limited to:

- Digital Multimeters
- Clamp Meters
- Rotation Meters
- HiPot Testers
- Potential Indicators
- Meggers
- Ground Thumpers
- Decade Boxes
- LTL Technicians offer assistance in establishing both testing and calibration schedule intervals to ensure equipment is reliable and ready for use
- Meter calibration and repair is traceable to NIST/NRC and in compliance with ISO 17025
- LTL supplies brand name meters from industry-leading manufacturers
- Also available, LTL-brand 361 contamination meters and potential indicators (7kV, 15kV, 30kV)

Portable Gas Detection Equipment Calibration, Repair and Maintenance

- Certified Master Service Centre
- Calibration, repair and maintenance of gas detection equipment including industry-leading brands such as Honeywell, BW Technologies, Lumidor, BioSystems, MSA, Crowcon
- LTL representatives offer assistance with selecting the right gas detection product to suit your specific confined space application
- LTL factory-certified technicians ensure compliance with the Occupational Health & Safety Act Confined Space Regulations
- Training - Beyond the Canary: Understanding the Air in Confined Spaces. Highlights: ABC's of Gas Detection, Confined Space Regulations, Legal Obligations/Compliance, Product-Specific Operation, Use and Care



Factory Authorized Warranty Repair Centres & Tool Testing

- Load break tools
- All hydraulic and battery operated tools
- All hoist/chain jacks
- Tools and replacement parts in stock
- Rental programs available
- Annual Certification



Certified Fall Protection Inspection, Maintenance & Repair

Industry best practices recommend field inspection of fall protection equipment prior to each use to ensure worker safety. As well, fall protection equipment should be thoroughly inspected annually by an accredited certified laboratory. LTL's certified Miller & DBI Sala/Capital Safety technicians offer inspection of harnesses, ropes, and slings to ensure the integrity of the fall arrest gear. Factory-Trained and Certified.

- Harnesses
- Ropes
- Slings
- Lanyards
- SRL's



Training & Education

With 60 years of industry-related technical expertise, LTL facilitators deliver specialized informational seminars. LTL's knowledgeable facilitators remain current with legislation relating to worker safety and personal protective equipment requirements, and have presented to numerous organizations in the electrical, industrial and health and safety fields.

Ensure you and your workers have the proper information necessary to promote a safe working environment while meeting legislated requirements. Seminars include instruction, training materials, and certificate of completion. We would be pleased to customize any of our sessions to best suit your specific requirements. Visit our website at www.ltl.ca for new topics, as well as seminars offered at LTL.

Online Electrical Worker Safety Training



Lineman's Testing Laboratories is pleased to recommend this program as the most interactive, informative and easy-to-follow online electrical safety training system in the industry today!

This user-friendly, online electrical training program offers a convenient, cost-effective solution for establishing safe work practices to ensure personal safety when exposed to energized electrical equipment. Whether at work, home or play, this Electrical Safety Training System (ESTS) has been specifically designed to suit the needs of the electrical and non-electrical worker.

The ESTS is a multi-media based, highly interactive experience comprised of several modules with multiple lessons, knowledge checks and a final assessment. The ESTS uses 3-D "Virtual Electrical Workplace" scenarios and a unique digital electrical classroom as a learning aid to teach concepts. Each module includes a knowledge check that utilizes interactive elements that engage the student in the learning process. The ESTS for electrical worker is a four-hour course incorporating industry accepted best practice standards, while the non-electrical course is 45 minutes.

Visit ltl.ca to get started.



Classroom Safety Training at your location or ours...



LTL provides the following in-class training seminars:

- Electrical Insulating Rubber Gloves
- Arc Flash Awareness: Are you Covered?
- Beyond the Canary: Understanding the Air in Confined Spaces
- Live Line Tools: Field Care & Maintenance

Who should attend?

- Anyone working on or near live electrical apparatus
- Supervisors, Managers, Business Owners
- Health and Safety Representatives
- Any worker entering a confined space (Beyond the Canary Seminar)

For more information, or to book a safety training session at your workplace, e-mail seminars@ltl.ca or call 800-299-9769.



Arc Flash Awareness



Live Line Tools:
Field Care & Maintenance



Beyond the Canary:
Air in Confined Spaces

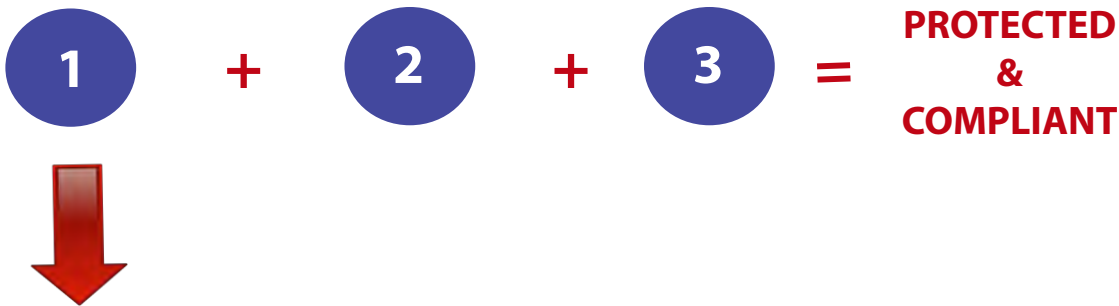


Insulating Rubber Gloves

LTL Arc Flash Safety Program

Protecting electrical workers since 1958, Lineman's Testing Laboratories is your single source for arc flash safety. Our complete Arc Flash Safety Program is managed and executed by our in-house electrical engineers, technicians, sales representatives and facilitators, and we inventory all applicable personal protective equipment (PPE). The program includes a CSA Z462-compliant Arc Flash Hazard Study, labeling of all applicable electrical equipment, supply of required PPE, and training.

Proper safety practices and on-going personnel training can minimize the likelihood of electrical injuries and fatalities due to shock, electrocution, arc flash and arc blast. At risk are employees who work on or near exposed energized electrical conductors or circuit parts including electrical maintenance personnel, operators, troubleshooters, electricians, linemen, engineers, site safety personnel, or anyone exposed to energized equipment.



CSA Z462 Compliant Arc Flash Hazard Study

Lineman's Testing Laboratories' comprehensive Arc Flash Studies determine potential arc flash incident energies and boundaries, shock hazard boundaries and proper personal protective equipment required for energized electrical equipment tasks for the system studied.

Performed by LTL's qualified engineers and technicians, LTL's Arc Flash Hazard Analysis includes:

- Complete engineering services
- Site assessment and data collection
- Short circuit and protective device coordination studies
- Labeling - warning labels identifying potential hazards and required safety equipment are affixed to all applicable electrical equipment
- Easy-to-read detailed Arc Flash Analysis reports
- Supply of personal protective equipment for arc flash protection
- Training - It is imperative that workers understand how and why the required PPE will help them, as well as how to properly care for and inspect this equipment to comply with legislation and ensure equipment integrity



FEATURED PRODUCT LINES



OFFICIAL 3M FULL LINE ELECTRICAL PRODUCTS DISTRIBUTOR

At LTL, we stock the 3M products you use everyday: splices, tapes, power connections, cold/heat shrinks and more. LTL is your source for all 3M electrical products and our knowledgeable staff will work with you to ensure we inventory any additional 3M products that you may require.

- Cold & Heat Shrinks
- Termination Kits
- Splices, tapes & more...



MASTER STOCKING DISTRIBUTOR FOR JELCO FALL EQUIPMENT PRODUCTS ACROSS CANADA

Jelco has focused on manufacturing quality fall protection equipment since 1892. Jelco products are tested in accordance with and meet or exceed applicable standards of OSHA, ANSI, CSA, and ASTM. LTL stocks, supplies and services a variety of Jelco equipment including:

- Combo Harnesses
- Pole Chokers
- D-Ring Tradition Belts
- Retractable Lanyards
- Self-Retracting Lifelines



MASTER UTILITY CHANNEL PARTNER FOR COLUMBUS MCKINNON PRODUCTS ACROSS CANADA

Spanning 140 years, Columbus McKinnon Corporation has a rich tradition of providing quality material handling products and services to meet the needs of users in a variety of industries around the globe.

LTL stocks, supplies and services a variety of hoists, chain jacks and rigging equipment from the Columbus McKinnon line, including Coffing Hoists and Little Mule. At LTL, we service this line, as well as other manufacturer lines, in our NAIL-accredited high voltage testing, inspection, calibration and factory-authorized warranty repair centres to ensure the integrity of your equipment as well as legislated compliance.



MASTER STOCKING DISTRIBUTOR FOR ALLIED BOLT PRODUCTS ACROSS CANADA

As the world leading supplier of outside plant hardware, Allied Bolt utilizes the latest technologies in manufacturing to ensure product quality, longevity, and ease of operation. Allied Bolt products have been used by customers across North America for over 60 years, including industrial, commercial and large Utilities in Canada.



- Earth Anchors
- Poleline Hardware
- Aerial Drop Hardware
- Drop Attachments
- Grounding Hardware
- Tools
- Anchors
- Fasteners



Hardware meets required standards.



EXCLUSIVE STOCKING DISTRIBUTOR FOR CPI PRODUCTS IN CANADA

Safe ~ No Special Tool Needed ~ No Added Cost of Tooling ~ Fast Installation ~
Hot Stick Install Design ~ Impact Wrench Install ~ Millions in the Air



REQUEST A DEMO AT YOUR LOCATION. WE ARE CONFIDENT THAT ONCE TRIED, GOING BACK TO POWDER WILL NOT BE AN OPTION!

Made in the USA, there are millions of CPI wedge connectors in the air today. CPI connectors have been used with near perfect annual installation performance by major Utilities across the USA for over 30 years, and by Utilities in Canada for over 20 years.

- Utilizes the industry-proven Wedge Connecting principle and is quick and easy to apply with a common socket or impact wrench. NO SPECIAL TOOLS.
- The "Spring-Like" qualities of the C-Body ensure permanent connection and maintains consistent pressure on the conductors.
- Installation time is quicker than conventional connectors and easily adaptable to standard hot-stick tools.
- High-conductivity grit type corrosion inhibitor is factory applied for ease of installation and longevity while the connector is in service.

CHANCE® LTL STOCKS AND SERVICES CHANCE PRODUCTS

A. B. Chance is a subsidiary of Hubbell Incorporated, founded in 1907. CHANCE manufactures electric utility transmission and distribution products. Chance's reputation for high quality products and performance establishes itself as a leader in the power utilities, telecommunications, construction and pipeline industries.

LTL stocks and services the following products by Chance:

- Rubber Goods - Insulating Rubber Gloves, Cover-Up
- Live Line Tools
- Grounds & Jumpers



STOCKING DISTRIBUTOR FOR MAKITA PRODUCTS, *the industry's preferred battery operated tools!*

Founded in 1915, Makita® has been producing high grade hand tools since 1959 and have earned the trust of users on jobsites around the world.

- The best single platform, rapid charge lithium-ion battery on the market
- Battery may be used with Makita®, Greenlee, Burndy and Sherman+Reilly tools
- Tools are more compact, have less vibration, feel better, and are built for maximum performance
- Brushless impact wrench delivers industry-leading maximum fastening and drilling torque
- With over 100 years of innovation, **blue** outperforms **red**!



Power Technical Services

Engineering/Substation

- Electrical power system specification/substation engineering/design engineered models
- High voltage engineered plan submissions to electrical utilities and Electrical Safety Authorities
- Short circuit current analysis and co-ordination studies
- Substation ground grid studies
- Electrical and electronic testing of high and low voltage substation components
- Power factor correction analysis and power quality studies
- Underground cable locating
- Transformer/Substation commissioning
- Protection system design/upgrades
- Protection relay panel design & fabrication
- NERC requirement consulting
- SCADA/HMI design and drawings
- Protection and control houses
- Troubleshooting and problem analysis
- Arc Flash Hazard Studies in accordance to CSA Z462: includes site assessment and data collection, short circuit and protective device coordination, labeling, easy-to-read detailed arc flash analysis reports, and protective equipment supply and training



Field Services

- Complete transformer commissioning and testing
- Transformer repair
- Transformer assemble/disassemble, transportation
- Fin replacement
- Bushing replacement
- Tap changer maintenance, repair and replacement
- Oil leak termination
- Painting
- Mobile Transformer oil regeneration
- Rewind service (shop only)
- Substation maintenance -- testing and calibration, inspection, adjustment, cleaning, repair and analysis of electrical insulating fluids
- Infrared Thermography (Scanning)
- New unit specification and supply
- Surplus equipment sales and purchase

Emergency Power Solutions

- 24-HR emergency services for commercial, industrial and utility sites: installations, repairs, splicing, terminations, fault locating, temporary cable supplies
- Generators and related equipment rentals: Transformers, metalclad switchgear, switches, towers, fuses



LTL IS A CERTIFIED S&C SUPPORTED CONTRACTOR - PMH AND PME PAD-MOUNT GEAR REFURBISHING

LTL's S&C factory-trained technicians support and complement S&C's vision for a complete customer service package that ensures in-service S&C equipment is maintained using original equipment parts, in an expedient manner, to manufacturer specifications for design and safety. LTL offers:

- | | |
|-------------------------------|-----------------|
| • Equipment exchange programs | • Testing |
| • Maintenance programs | • Commissioning |
| • Painting | |



We service all switchgear, including, but not limited to, PMH and PME pad-mounted gear, offering complete restoration to near-new quality. LTL's full service offering includes pick-up of equipment at the customer site, removal from in-service yard locations, and tailored service to specific customer requirements.



Station Class Transformer Refurbs



Pad Mount Transformer Refurbs



NOTE: Services available in Ontario only.

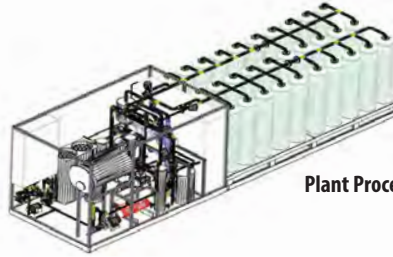
Mobile Transformer Oil Regeneration

By maintaining the transformer oil at near new condition at all times, the transformer's lifespan can be significantly prolonged and the risk of dielectric breakdown reduced, resulting in significant cost savings.

Lineman's Testing Laboratories' fully automated, state-of-the-art mobile oil regeneration process is an environmentally friendly and cost-effective solution to extending the life of your transformer. Meeting MOE requirements, LTL's system uses a relatively low amount of electricity and can process up to four million litres of oil before changing the filter medium; the filter medium is then disposed of as clean fill. Other methods can produce oil impregnated contaminated wasted.



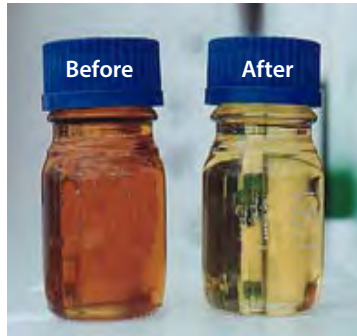
State-of-the-Art Mobile Oil Regeneration Plant



Plant Processing and Column View

Transformer Oil Processing Services

- Filtration: particle removal
- Dehydration: water removal
- Degasification: removal of gas
- Purification: includes all of the above
- Regeneration: acidity, colour
- Desludging: sludge removal
- Anti-oxidant: DBPC inhibitor additives
- Core dry-out
- Vacuum fill
- Complete oil sampling with full report (five-way, gas, PCB, furans, water content)
- Mode 60 oil sales and oil removal program
- PCB management solutions



Tx Oil Before and After Regeneration



Plant Control Room

Oil Regeneration Benefits

- Regenerated oil performs as new or better
- Improved transformer reliability
- Transformer performs to manufacturer nameplate criteria, increasing fault/over-voltage capabilities
- Protects integrity of internal components
- Extends infrastructure/transformer life cycle
- Reduces capital expenditure



Processing & Vacuum System



Plant Filtration Columns

Stay Connected

JOIN OUR COMMUNITY!



The LTL Blog
Product and safety news and tips
ltl.ca/newsroom/blog/



How-to videos for inspecting and maintaining safety equipment
youtube.com/ltlcanada



Industry and company news, and LTL career opportunities
linkedin.com/company/lineman's-testing-laboratories



Sharing product information and news for the utility, industrial and forestry sectors
twitter.com/ltlcanada



LTL UTILITY SUPPLY PRODUCT CATALOGUE available for download, featuring 400+ colour pages; thousands of quality products; over 65 industry-leading manufacturers!
[Visit the Information Centre on ltl.ca to download!](http://ltl.ca)

SIGN UP

VISIT LTLUTILITYSUPPLY.COM TO SIGN UP FOR:



LTL Buzz: news, product & service information for the utility, industrial & forestry sectors



HOT ZONE SPECIALS: don't miss out on our product deals



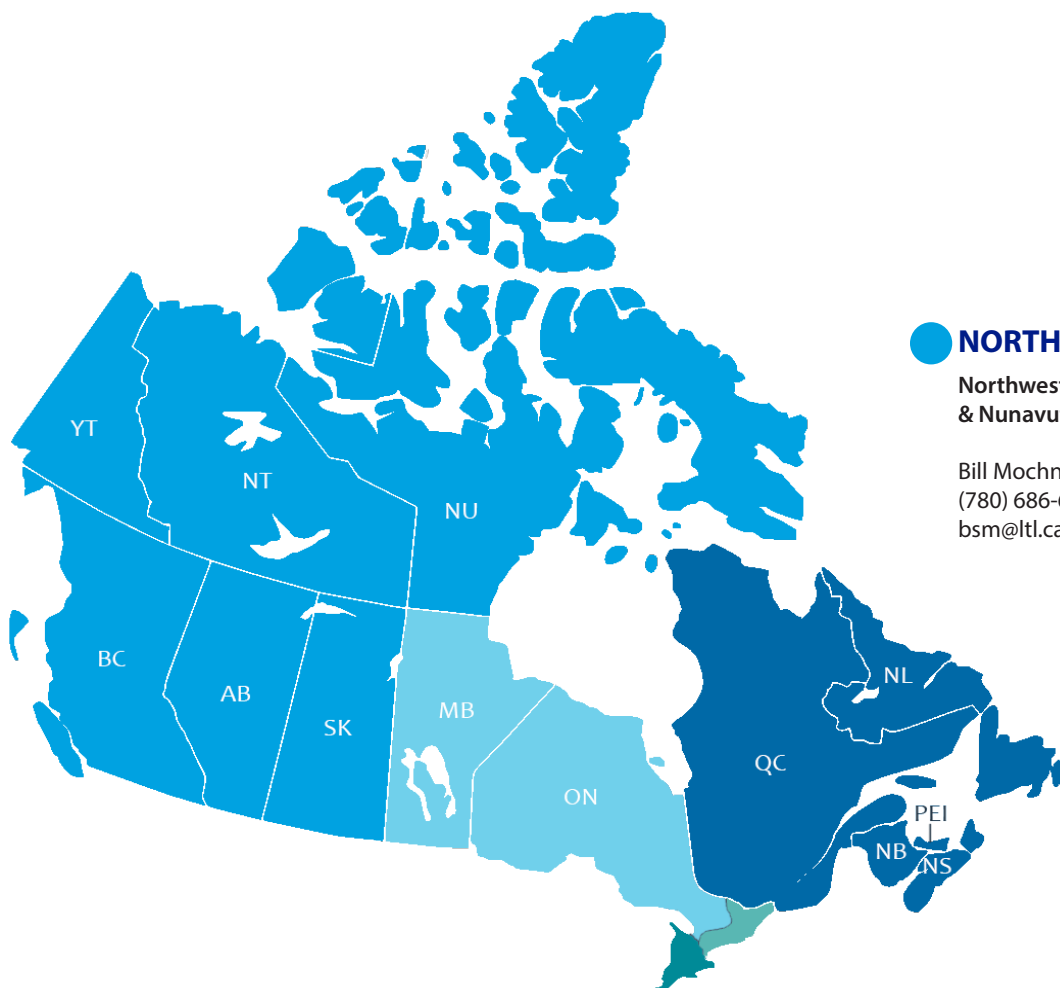
SATISFACTION SURVEY - Tell us how we're doing

At LTL, we are always striving to improve and enhance our customers' experience by offering the best in quality products and customer care. Please take a moment and let us know how we're doing by completing our online survey at ltl.ca/contact-us/satisfaction-survey/

All information collected is proprietary and will not be disclosed to external entities.



FIND AN LTL UTILITY SUPPLY REP NEAR YOU



NORTHERN CANADA

Northwest Territories, Yukon & Nunavut

Bill Mochniuk
(780) 686-6911
bsm@ltl.ca

WESTERN CANADA

British Columbia

Peter D'Sa
(604) 839-6911
pjd@ltl.ca

Alberta

Bill Mochniuk
(780) 686-6911
bsm@ltl.ca

Manitoba & Saskatchewan

Alain Proulx
(514) 889-6911
ajp@ltl.ca

CENTRAL CANADA

Ontario

Kevin Dingeldein
(416) 738-6911
krd@ltl.ca

Rob Fries
(289) 237-6959
rnf@ltl.ca

Quebec

Alain Proulx
(514) 889-6911
ajp@ltl.ca

Martin Sarrazin
(514) 409-6911
mjs@ltl.ca

EASTERN CANADA

Prince Edward Island,
Nova Scotia, Newfoundland, Quebec &
New Brunswick

Martin Sarrazin
(514) 409-6911
mjs@ltl.ca

POWER TECHNICAL SERVICES All inquiries

Reg Prasad
(416) 742-6911 Ext. 198
rap@ltl.ca





Serving the utilities, industrial and forestry sectors coast-to-coast since 1958

HEAD OFFICE

High Voltage Testing, Calibration and
Repair Laboratory, Distribution Centre
& Sales Office

46 Meridian Road
Toronto, ON M9W 4Z7
Telephone: 416-742-6911
Toll-Free: 800-299-9769
Fax: 416-748-0290
Email: main@ltl.ca

WESTERN CANADA

High Voltage Testing, Calibration and
Repair Laboratory, Distribution Centre
& Sales Office

6212-88 Street NW
Edmonton, AB T6E 2Y9
Telephone: 780-434-4911
Toll-Free: 800-530-8640
Fax: 780-434-9911
Email: mainab@ltl.ca

Sales Office - BC
Telephone: 604-945-6912
Toll-Free: 866-347-6911
Email: mainbc@ltl.ca

EASTERN CANADA

Sales Office - Quebec

Telephone: 450-477-2787
Toll-Free: 800-299-9769
Fax: 450-477-3388
Email: quebec@ltl.ca

www.ltl.ca | ltlutilitysupply.com

2019/01