



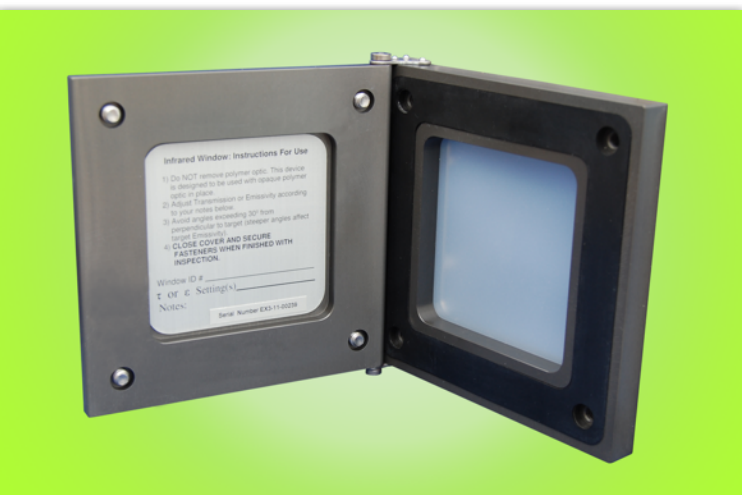
XIR Series IR Window

Compliance Made Easy, Efficient

Keep energized electrical equipment closed during inspection, and easily comply with OSHA, NFPA 70E, CSA Z462 and similar electrical safety mandates.

Closed-panel inspections eliminate inherently high-risk tasks, such as removing panels or opening hinged doors, making your work processes safer for personnel, plant assets and processes.

The more efficient work process can reduce inspection costs by 75% to 95%, while improving worker safety.



Get **MORE** with Exiscan

- More Structural Integrity:**
 - Impact resistant optic per UL and ANSI standards.
 - Body & cover machined from bar stock aluminum (stainless steel available).
- More Viewing Area:**
 - 4" x 4" aperture is 66% larger than similar sized round windows.
 - Square aperture does not "clip" camera's squared display.
 - Camera lens can be placed on window optic (as opposed to 2" back) for fuller field of view.
- More Accuracy:**
 - Higher "flatter" LWIR Transmission curves for temperature accuracy.
 - Polymer optic remains stable over life of product without delicate sealants required.
- More Value:**
 - Contact your local Distributor for a demonstration, and see why Exiscan is the best value on the market today.

Access the Inaccessible:

How does your facility inspect equipment that can no longer be opened while energized due to that equipment's voltage or incident energy rating? How does your facility inspect equipment protected by switched interlocks? IR windows provide safe access to "inaccessible" energized equipment.

Analyze Better Data:

Because using inspection windows does not increase risk of electrical hazards, inspections can be performed during peak load, when data collection is ideal, without worry of accidental process interruption.

Patent Pending



TRUSTED SINCE 1958 ltlutilitysupply.com



For more information, contact your local branch:

ON, QC & Maritime Provinces: 800-299-9769
AB, SK, MB, Northern Territories: 800-530-8640
British Columbia: 866-347-6911

XIR Series IR Window

XIR-A-4-H-X	
Dimension Specifications (nom.)	
Body and Cover (L x H)	6.0 in x 6.0 in (152 mm) x (152 mm)
Total Width (Body + Cover)	0.9 in (23 mm)
Cover Thickness	0.4 in (10 mm)
Aperture Dimension	4.0 in x 4.0 in (102 mm) x (102 mm)
Aperture Area	16 sq in (406 sq mm)
Tested / Certified	
UL 50V (IR Window Standard)	Yes
UL Type Rating / NEMA	Type 4
Ingress Protection (IP)	IP65
UL 746C (Impact & Flame Resistance)	Yes
ANSI/IEEE C37.20.2 Sec A.3.6 (Switchgear Window Impact Resistance)	Yes
ANSI/IEEE C37.20.7 Arc Resistance	Yes
CSA Compliant (cUL)	Yes
Material Specifications	
Body & Cover Material	Aluminum: Anodized & Powder Coated
Backer Plate & Finger Guard	Stainless Steel
Hardware & Fasteners	Stainless Steel
Optic	Transmissive Polymer
Gaskets	Silicone & Neoprene
Cover Screws*	¼-20 Captive
Transmission Compatibility	
Mid Wave & Long Wave Imagers	All Brands
Vibration	Unaffected
Broad Spectrum Acids / Alkalis	Unaffected
Humidity & Moisture	Unaffected
General	
Voltage Range	Low, Medium & High
Grounding	Automatically grounds when mounted to grounded panel/door
Operating Temperature	-40°C (-40°F) to 150°C (300°F)
Installation	Saw-Cut or Punch
Lifetime Warranty	Unconditional for Materials & Workmanship
Patent	Patent Pending: USA and International
Country of Origin	Proudly Made in the USA

*Standard Cover Screw Type: Allen Head (Hex Socket). Other options available.